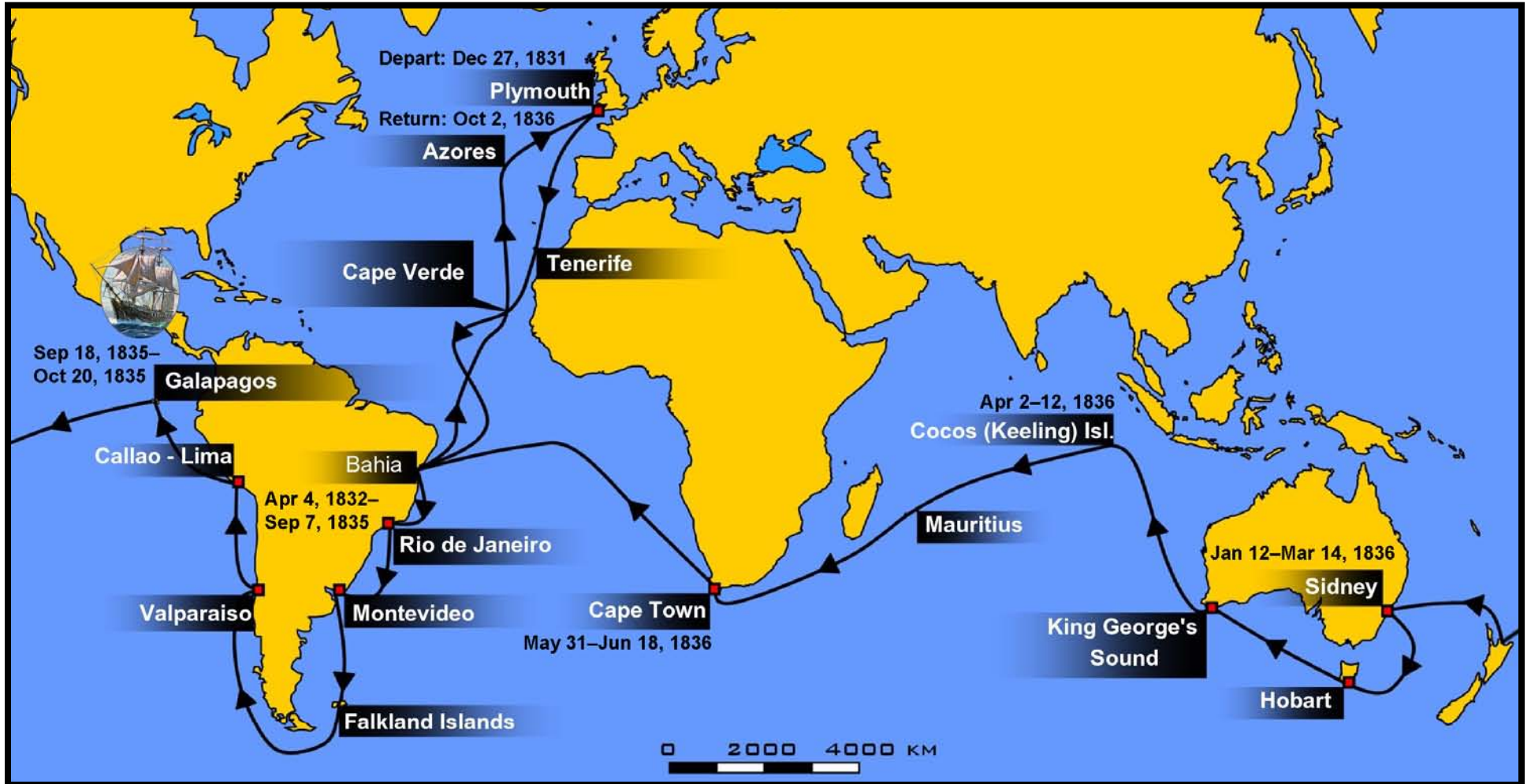


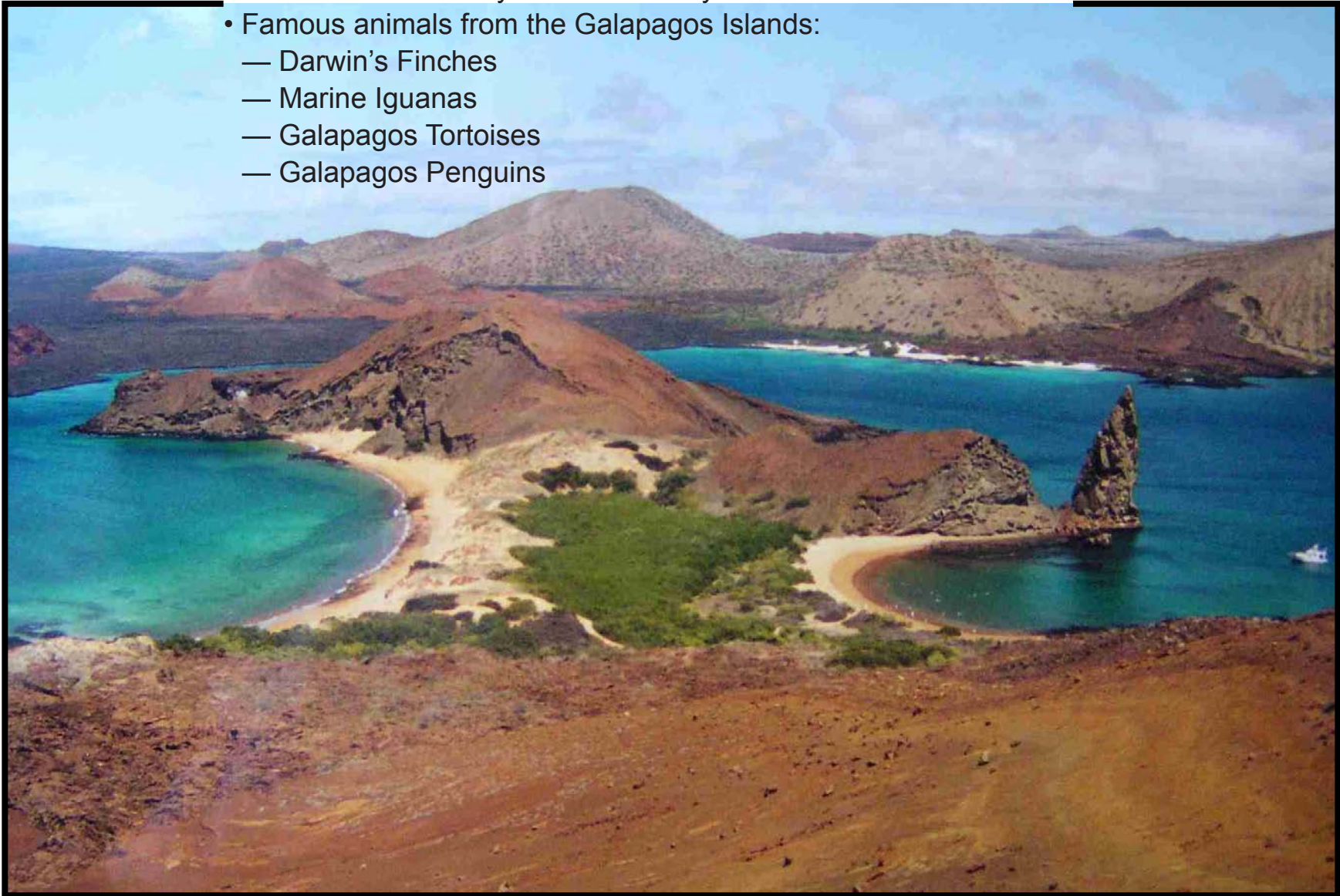
Modified from map in the public domain, from Wikipedia



The *HMS Beagle* visits the Galapagos Islands from September 18, 1835, to October 20, 1835.

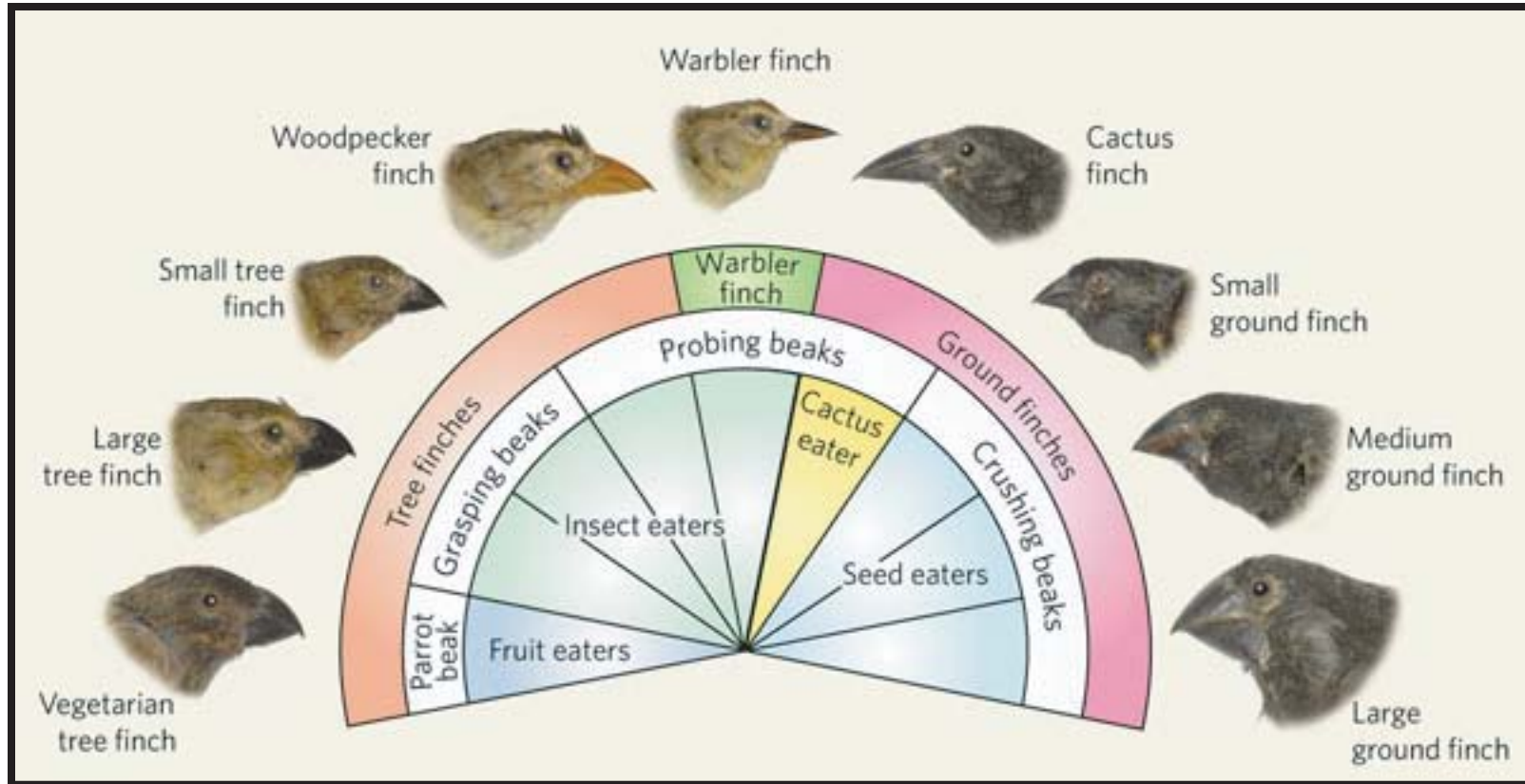
# Galapagos Islands

- The Galapagos Islands are volcanoes in the middle of the ocean
- Not many types of plants and animals could make it to the islands because they are so far away from the mainland
- Famous animals from the Galapagos Islands:
  - Darwin's Finches
  - Marine Iguanas
  - Galapagos Tortoises
  - Galapagos Penguins



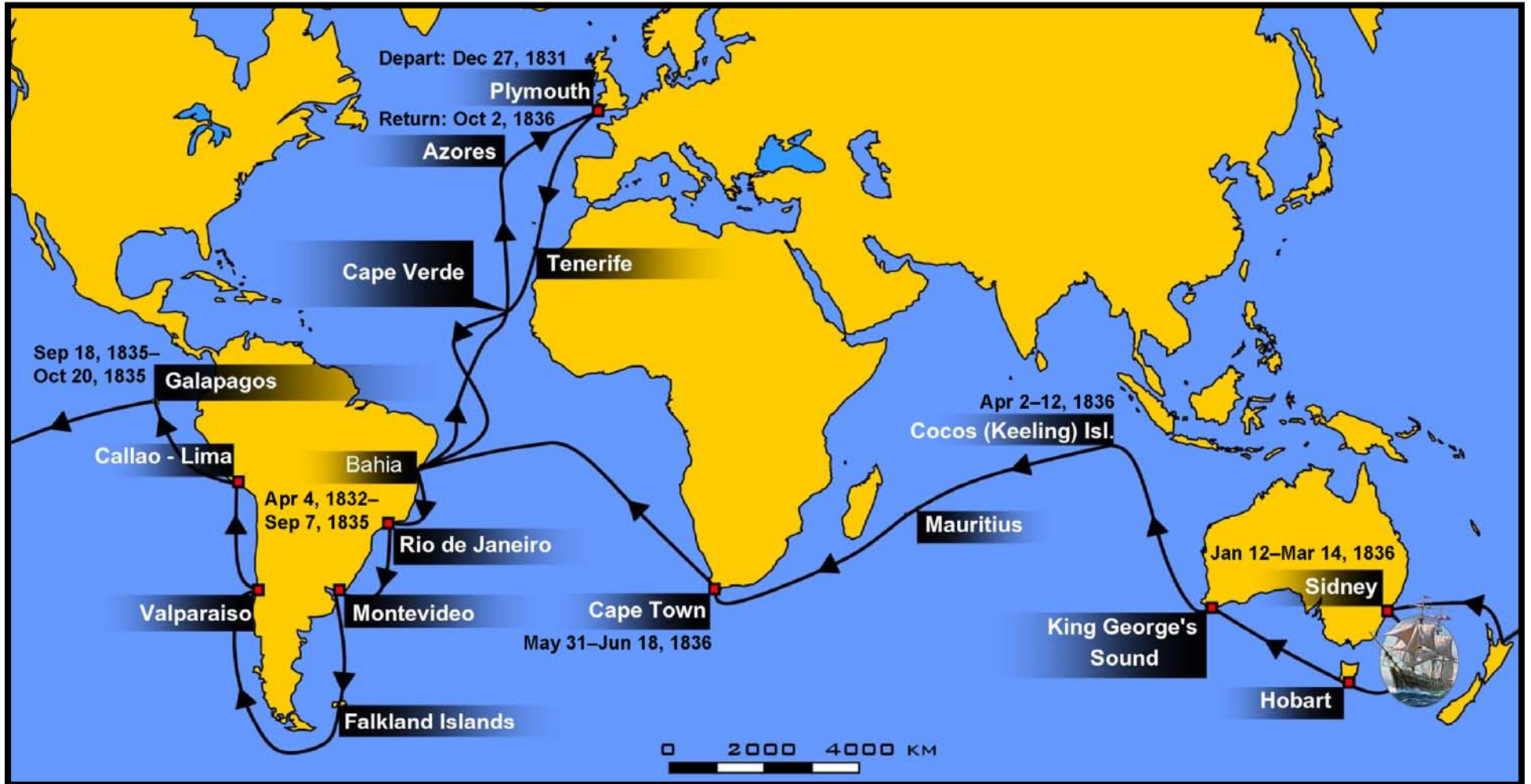


# Galapagos Finches



© 2001 WGBH Educational Foundation and Clear Blue Sky Productions, Inc. All Rights Reserved.

Modified from map in the public domain, from Wikipedia



The *HMS Beagle* makes stops in Australia between January 12 and March 14, 1836.



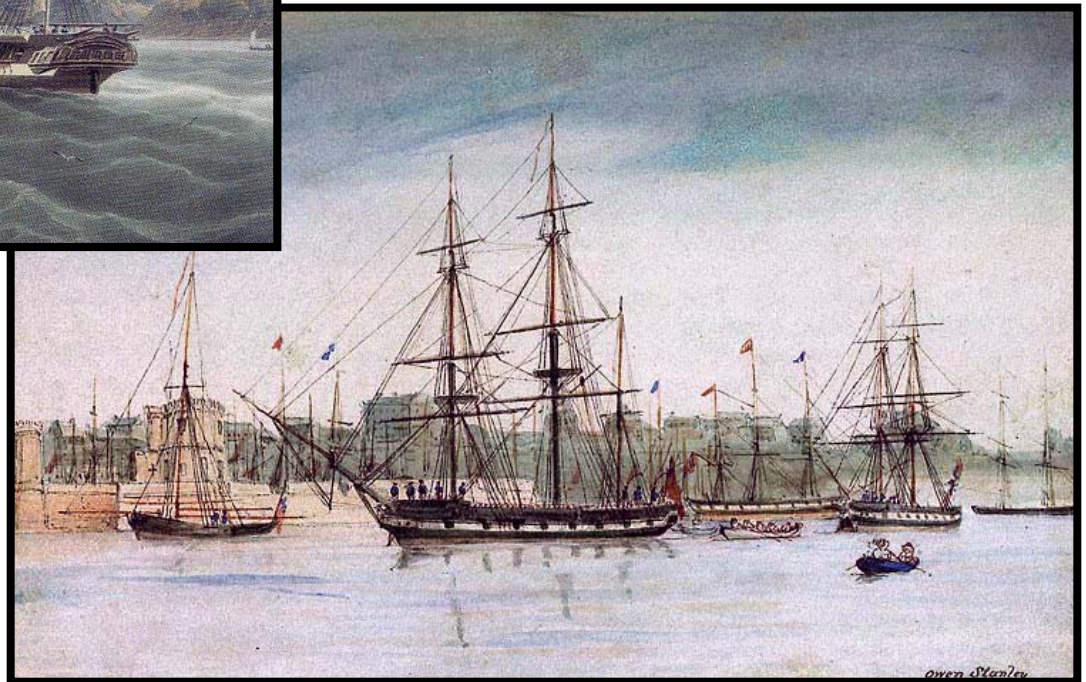
# Australia

- All mammals native to Australia are either
  - Marsupial, meaning they carry their young in pouches, or
  - Monotremes, meaning they lay eggs
- These mammals are very distantly related to all other mammals

Both images in the public domain, from Wikipedia



A ship brings supplies to the early colonists at Sydney harbor, circa 1830



*HMS Beagle*, painted during a later survey of Australia in 1841



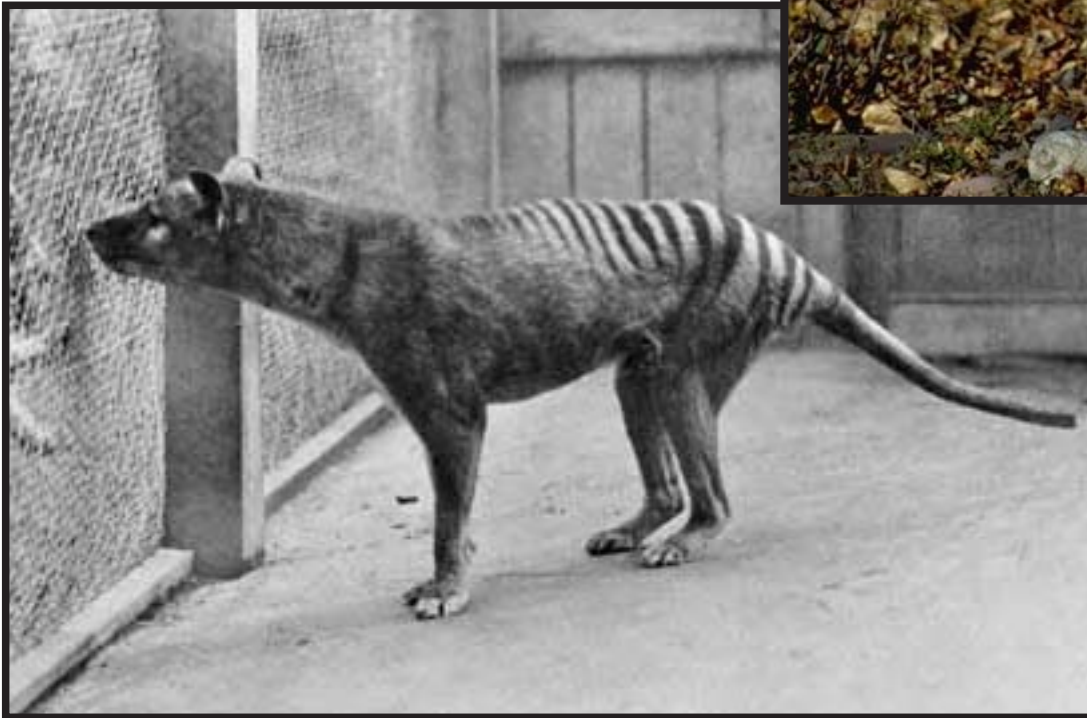




Marsupial wolf photo in the public domain, from Wikipedia; Arctic Timber Wolf photo by Robert Potts © 2001 California Academy of Sciences



Arctic Timber Wolf



The last living marsupial wolf, photographed in 1933