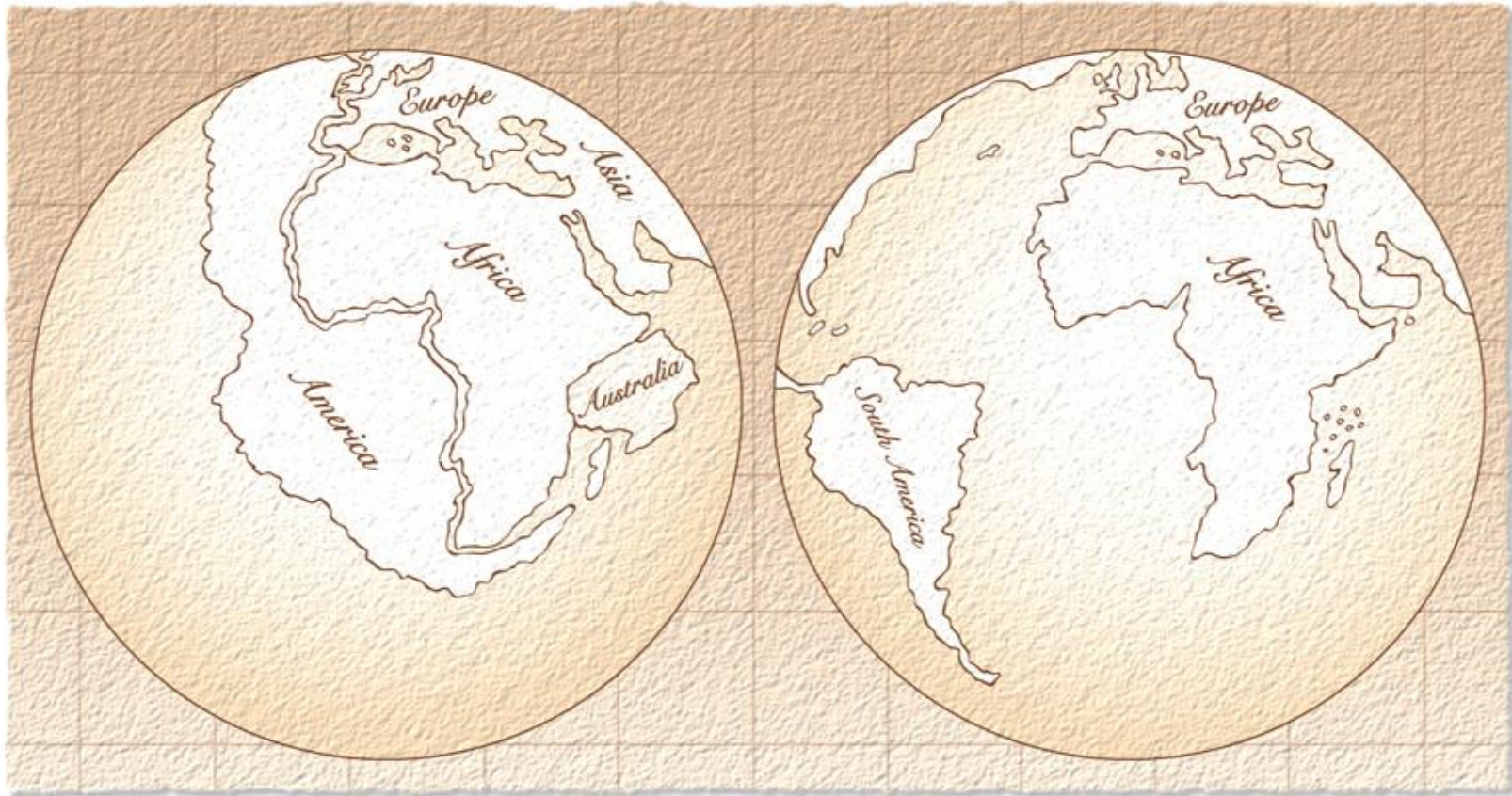


## Continental Drift

- Acceptance of the continental drift hypothesis led to the development of the theory of plate tectonics.
- As lithospheric plates move, they create environmental changes for the organisms that live in or near them.
- The changes lead to the development of and extinction of species.



# Continental Drift (cont.)



Resources



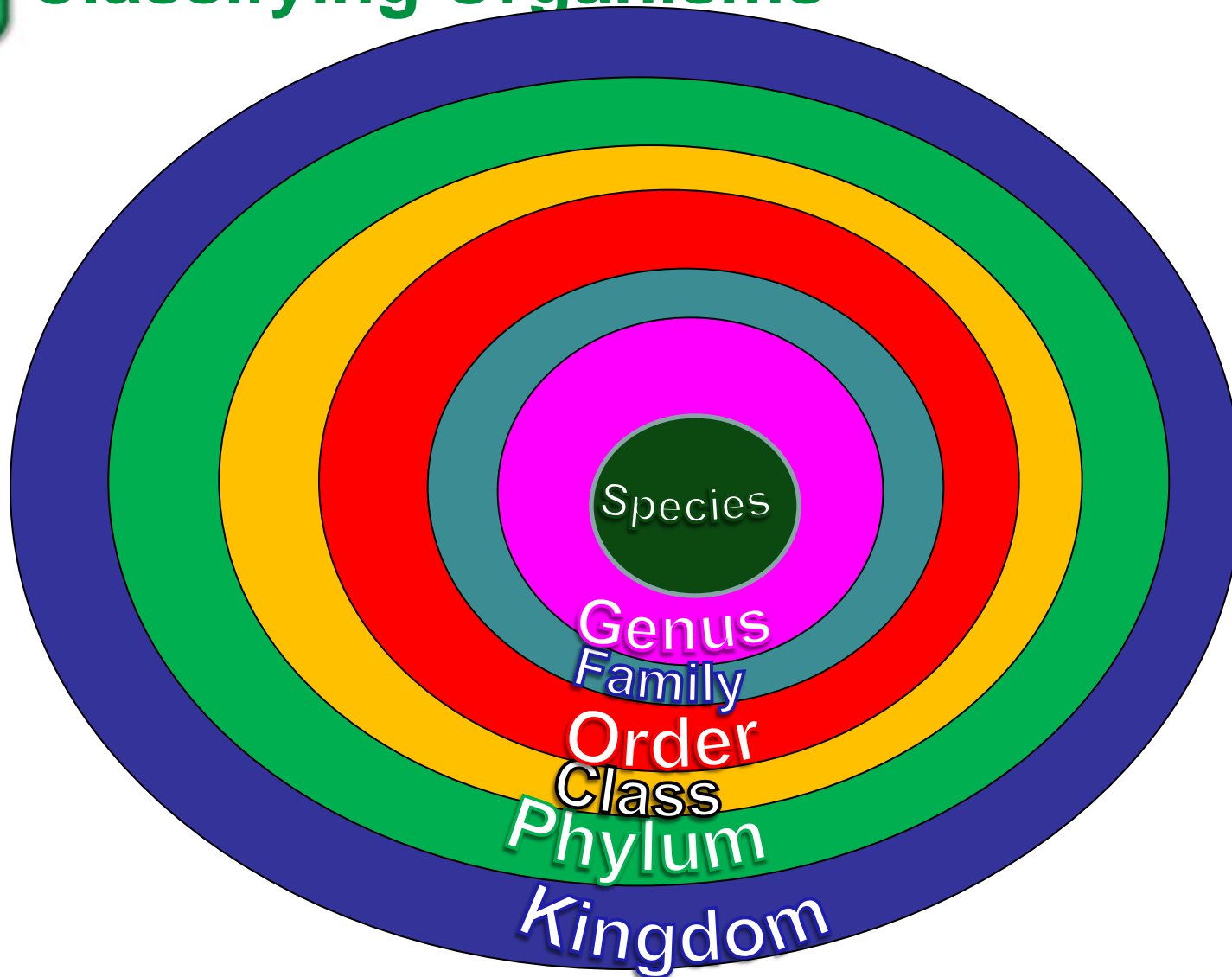
## Geographic Isolation



- **Geographic isolation** occurs when populations of species are separated by a physical barrier.
- Once separated, the populations might follow different evolutionary paths.



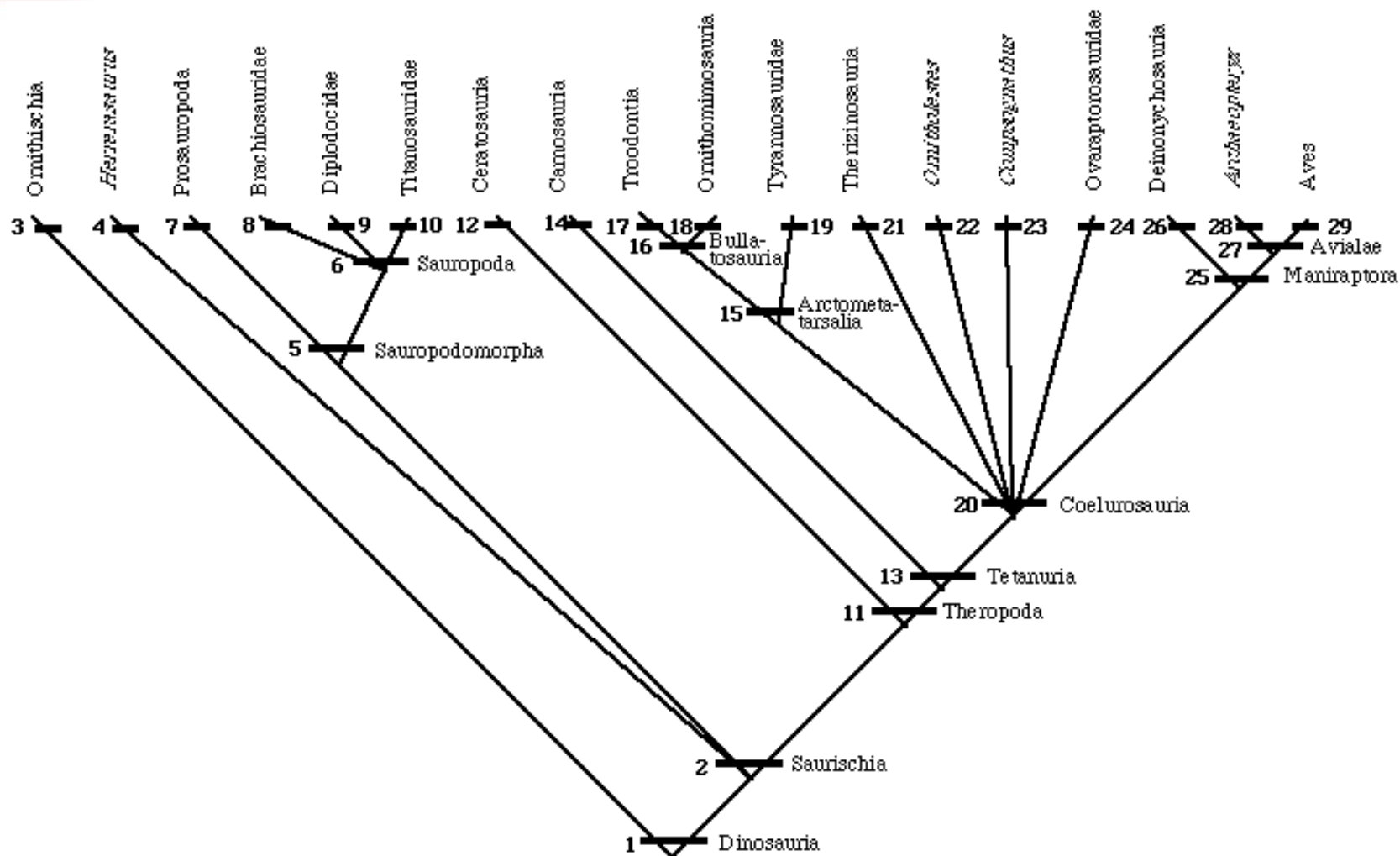
# Classifying Organisms



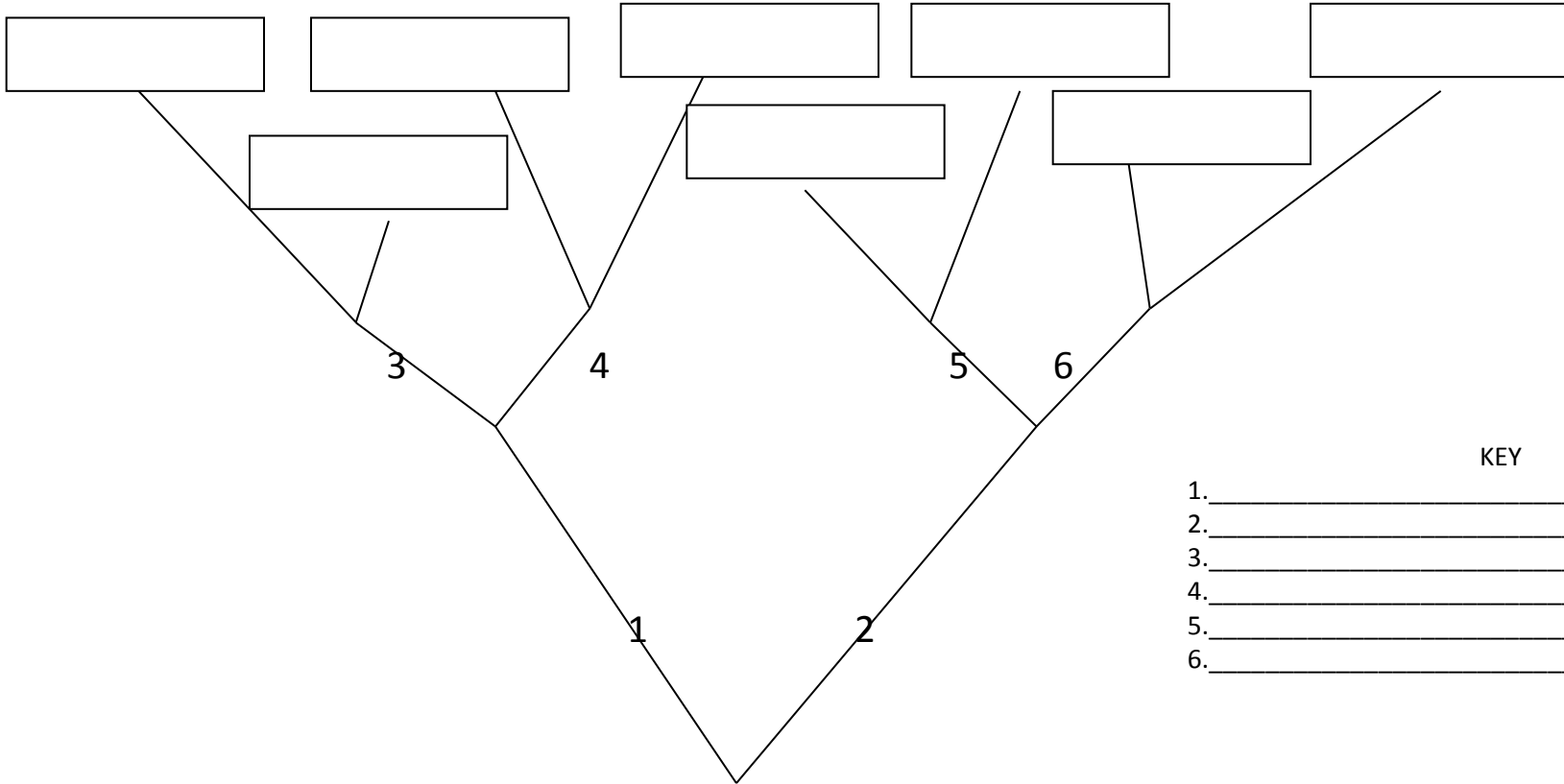
HOME

Resources





# MINI LAB pg 264



KEY

1. \_\_\_\_\_
2. \_\_\_\_\_
3. \_\_\_\_\_
4. \_\_\_\_\_
5. \_\_\_\_\_
6. \_\_\_\_\_

